



## SECTION NAME

## NEET Sample

DURATION: 0 Hours 30 Minutes

DATE: 2025-03-28

## SYLLABUS

<b>Botany:</b>	Sexual Reproduction In Flowering Plants.
<b>Zoology:</b>	Human Reproduction.

## (Botany)

- Opening of floral buds into flowers is type of
  - Autonomic movement of growth
  - Autonomic movement of locomotion
  - Autonomic movement of variation
  - Paratonic movement of growth
- Stamen is technically equivalent to
  - Megasporophyll
  - Megasporangia
  - Microsporophyll
  - Male gametophyte
- Which of the following layers of anther wall perform the function of protection and also help in dehiscence of anther to release the pollens?
  - Epidermis
  - Endothecium
  - Middle layers
  - Tapitum
  - Only (A)
  - (A) and (C)
  - (A) and (B)
  - (A), (B) and (C)
- The stalk of Datura flower at its base is known as
  - Pediceal
  - Corolla
  - Sepals
  - Thalamus
- Germ pore is the area where exine is
  - Thick
  - Uniform
  - Absent
  - Thick and uniform
- Of the following structures found in angiosperms, the one that does not have an equivalent structure in coniferophyta is
  - an embryo sac
  - carpel
  - sepal
  - stamen
- Which cell of the gametophyte of a normal angiosperm (*Capsella*) is diploid at the time of fertilisation?
  - Prothallial cell/vegetative cell
  - Antipodal cell and synergids
  - Secondary nucleus
  - Generative cell
- What is the direction of micropyle in anatropous ovule?
  - upward
  - downward
  - right
  - left
- Tenuinucellate ovules are found in
  - Cruciferae
  - Malvaceae
  - Compositae
  - Liliaceae
- Which function of tapetum is correct?
  - Helps in pollen wall formation.
  - Transportation of nutrients to inner side of anther.
  - Synthesis of callase enzyme for separation of microspore tetrads.
  - All of these
- Which outbreeding device involves the temporal separation of pollen release and stigma receptivity?
  - Herkogamy
  - Dichogamy
  - Cleistogamy
  - Self-incompatibility
- Faster and better growth of pollen from other plants than the pollen from the same plant is
  - self-incompatibility
  - dichogamy
  - monocliny
  - prepotency
- Allogamy is favoured by
  - homogamy
  - cleistogamy
  - monocliny
  - dicliny
- ..... is favoured by heterostyly in *Primula*
  - Autogamy
  - Allogamy

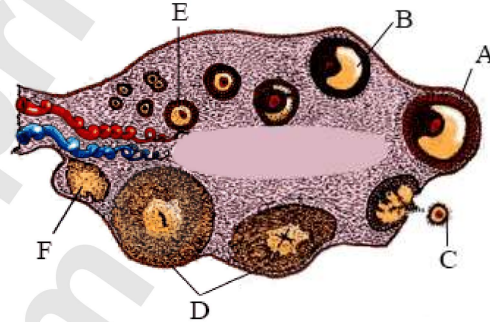
- C) Homogamy                      D) All of these
15. Dichogamy is a mechanism that prevents:  
 A) Self-pollination              B) Cross-pollination  
 C) Pollination in general        D) Seed germination
16. Pappus is present in Composite for  
 A) air pollination                B) insect pollination  
 C) water pollination              D) air dispersal
17. The orchid flowers emit a chemical that resembles the odour produced by the female wasps for sexual attraction. The chemical is  
 A) pheromone                      B) kinetin  
 C) florigen                         D) cytokinin

18. In Cannabis, pollination is carried out by  
 A) insects                            B) wind  
 C) birds                              D) bats
19. Mimicry like condition is helpful in the pollination of  
 A) *Blastophaga*                  B) *Ophrys*  
 C) *Yucca*                            D) *Magnolia*
20. When pollen of a flower is transferred to the stigma of another flower of the same plant, the pollination is referred to as  
 A) autogamy                        B) geitonogamy  
 C) xenogamy                        D) allogamy

## (Zoology)

21. Mesorchium is the peritoneal covering of  
 A) ovary                              B) testis  
 C) kidney                            D) liver
22. The functional unit of testis in man is  
 A) uriniferous tubules            B) malpighian tubules  
 C) seminiferous tubules        D) acini or lobules
23. Where does sperm maturation take place?  
 A) Urethra                          B) Epididymis  
 C) Vas deferens                    D) Seminiferous tubules
24. On the 13<sup>th</sup> day of the uterine cycle, the level of the follicle stimulating hormone is *i*. The level of the luteinizing hormone which stimulates ovulation is *ii* on the 13<sup>th</sup> day of the uterine cycle. Which alternative completes the given statement?  
 A) *i*- high *ii*- low                B) *i*-low *ii*-high  
 C) *i*-high *ii*-also high        D) *i*-low *ii*-also low
25. Which among the following has 23 chromosomes?  
 A) Spermatogonia                B) Zygote  
 C) Secondary oocyte            D) Oogonia
26. The main function of the fimbriae of the Fallopian tube in females is to  
 A) release ovum from the Graafian follicle    B) make necessary changes in the endometrium for implantation  
 C) help in the development of corpus luteum    D) help in the collection of the ovum after ovulation
27. Mesovarium is the peritoneal covering of  
 A) ovary                              B) testis  
 C) kidney                            D) liver

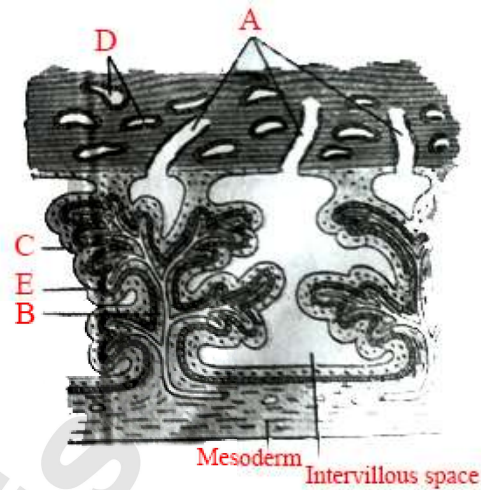
28. In the given T. S. of human ovary identify A to F and select the correct option



- A) A-Secondary follicle, B- Tertiary follicle with antrum, C-Ovum, D- Corpus luteum, E- Primary follicle, F- Corpus albicans      B) A-Graafian follicle, B- Tertiary follicle with antrum, C-Ovum, D- Corpus spongiosum, E- Primary follicle, F- Corpus albicans
- C) A-Graafian follicle, B- Tertiary follicle with antrum, C-Ovum, D- Corpus albicans, E- Primary follicle, F- Corpus albicans      D) A-Graafian follicle, B- Tertiary follicle with antrum, C-Ovum, D- Corpus luteum, E- Primary follicle, F-Corp albicans
29. Atretic follicles occur in :  
 A) Ovary                              B) Thymus  
 C) Testis                              D) Liver
30. Which of the following is secondary sex organ?  
 A) Beard                              B) Uterus  
 C) Ovary                              D) Broad hips
31. In human beings, the eggs are  
 A) mesolecithal                      B) alecithal  
 C) microlecithal                    D) macrolecithal
32. The time for optimum chances of conception in a woman is \_\_\_\_\_ starting from the day of menstruation.

- A) 1st day                      B) 4th day  
C) 14 th day                  D) 26 th day
33. Mature Graafian follicle is generally present in the ovary of a healthy human female around
- A) 5 – 8 day of menstrual cycle      B) 11 – 17 day of menstrual cycle  
C) 18 – 23 day of menstrual cycle      D) 24 – 28 day of menstrual cycle
34. Cessation of menstrual cycle is called
- A) ovulation                      B) puberty  
C) menopause                  D) implantation
35. Onset of menstruation of human female is called
- A) menopause                  B) puberty  
C) gestation                      D) menarche
36. Which of the following prevents the formation of corpus luteum and Graafian follicles ?
- A) LH                                B) Oestrogen  
C) F S H                          D) Progesterone
37. Which of the following hormones is not a secretion product of human placenta?
- A) human chorionic gonadotropin      B) prolactin  
C) estrogen                      D) progesterone

38. In the below figure of placental villi, identify the markings from the given options, if
- I. uterine vessels      II. syncytiotrophoblast  
III. cytotrophoblast      IV. fetal vessels  
V. uterine glands



- A) A B C D E                      B) A B C D E  
V IV I III II                      III II I IV V
- C) A B C D E                      D) A B C D E  
I IV II V III                      I V II IV III
39. The first movement of the foetus and appearance of hair on its head are usually observed during which month of pregnancy?
- A) fourth month                  B) fifth month  
C) sixth month                      D) third month
40. The early stage human embryo distinctly possesses
- A) gills                                B) gill slits  
C) external ear (pinna)          D) eyebrows